

# Set 1

First and second scale degrees (do-re)

♪ ♪ and Whole bar rest

1

Exercise 1: 4/4 time signature, piano (*p*). The exercise consists of two staves. The upper staff contains a sequence of notes: C4 (quarter), D4 (quarter), C4 (quarter), D4 (quarter), E4 (quarter), F4 (quarter), G4 (quarter), A4 (quarter), B4 (quarter), C5 (quarter), B4 (quarter), A4 (quarter), G4 (quarter), F4 (quarter), E4 (quarter), D4 (quarter), C4 (quarter). The lower staff contains a sequence of notes: C4 (quarter), D4 (quarter), E4 (quarter), F4 (quarter), G4 (quarter), A4 (quarter), B4 (quarter), C5 (quarter), B4 (quarter), A4 (quarter), G4 (quarter), F4 (quarter), E4 (quarter), D4 (quarter), C4 (quarter). There are rests in the upper staff at measures 2, 4, 6, 8, 10, 12, 14, and 16.

2

Exercise 2: 3/4 time signature, forte (*f*). The exercise consists of two staves. The upper staff contains a sequence of notes: C4 (quarter), D4 (quarter), E4 (quarter), F4 (quarter), G4 (quarter), A4 (quarter), B4 (quarter), C5 (quarter), B4 (quarter), A4 (quarter), G4 (quarter), F4 (quarter), E4 (quarter), D4 (quarter), C4 (quarter). The lower staff contains a sequence of notes: C4 (quarter), D4 (quarter), E4 (quarter), F4 (quarter), G4 (quarter), A4 (quarter), B4 (quarter), C5 (quarter), B4 (quarter), A4 (quarter), G4 (quarter), F4 (quarter), E4 (quarter), D4 (quarter), C4 (quarter). There are rests in the lower staff at measures 2, 4, 6, 8, 10, 12, 14, and 16.

3

Exercise 3: 2/4 time signature, alternating forte (*f*) and piano (*p*). The exercise consists of two staves. The upper staff contains a sequence of notes: C4 (quarter), D4 (quarter), E4 (quarter), F4 (quarter), G4 (quarter), A4 (quarter), B4 (quarter), C5 (quarter), B4 (quarter), A4 (quarter), G4 (quarter), F4 (quarter), E4 (quarter), D4 (quarter), C4 (quarter). The lower staff contains a sequence of notes: C4 (quarter), D4 (quarter), E4 (quarter), F4 (quarter), G4 (quarter), A4 (quarter), B4 (quarter), C5 (quarter), B4 (quarter), A4 (quarter), G4 (quarter), F4 (quarter), E4 (quarter), D4 (quarter), C4 (quarter). There are rests in the lower staff at measures 2, 4, 6, 8, 10, 12, 14, and 16.

4

Exercise 4: 4/4 time signature, alternating forte (*f*) and piano (*p*). The exercise consists of two staves. The upper staff contains a sequence of notes: C4 (quarter), D4 (quarter), E4 (quarter), F4 (quarter), G4 (quarter), A4 (quarter), B4 (quarter), C5 (quarter), B4 (quarter), A4 (quarter), G4 (quarter), F4 (quarter), E4 (quarter), D4 (quarter), C4 (quarter). The lower staff contains a sequence of notes: C4 (quarter), D4 (quarter), E4 (quarter), F4 (quarter), G4 (quarter), A4 (quarter), B4 (quarter), C5 (quarter), B4 (quarter), A4 (quarter), G4 (quarter), F4 (quarter), E4 (quarter), D4 (quarter), C4 (quarter). There are rests in the lower staff at measures 2, 4, 6, 8, 10, 12, 14, and 16.

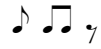
5

Exercise 5: 3/4 time signature, alternating piano (*p*) and forte (*f*). The exercise consists of two staves. The upper staff contains a sequence of notes: C4 (quarter), D4 (quarter), E4 (quarter), F4 (quarter), G4 (quarter), A4 (quarter), B4 (quarter), C5 (quarter), B4 (quarter), A4 (quarter), G4 (quarter), F4 (quarter), E4 (quarter), D4 (quarter), C4 (quarter). The lower staff contains a sequence of notes: C4 (quarter), D4 (quarter), E4 (quarter), F4 (quarter), G4 (quarter), A4 (quarter), B4 (quarter), C5 (quarter), B4 (quarter), A4 (quarter), G4 (quarter), F4 (quarter), E4 (quarter), D4 (quarter), C4 (quarter). There are rests in the lower staff at measures 2, 4, 6, 8, 10, 12, 14, and 16.

6

Exercise 6: 5/4 time signature, alternating forte (*f*) and piano (*p*). The exercise consists of two staves. The upper staff contains a sequence of notes: C4 (quarter), D4 (quarter), E4 (quarter), F4 (quarter), G4 (quarter), A4 (quarter), B4 (quarter), C5 (quarter), B4 (quarter), A4 (quarter), G4 (quarter), F4 (quarter), E4 (quarter), D4 (quarter), C4 (quarter). The lower staff contains a sequence of notes: C4 (quarter), D4 (quarter), E4 (quarter), F4 (quarter), G4 (quarter), A4 (quarter), B4 (quarter), C5 (quarter), B4 (quarter), A4 (quarter), G4 (quarter), F4 (quarter), E4 (quarter), D4 (quarter), C4 (quarter). There are rests in the lower staff at measures 2, 4, 6, 8, 10, 12, 14, and 16.

# Set 11



1

2

3